

INDICATIVE PLANTING SCHEDULE

SYMBOL	BOTANIC NAME	COMMON NAME	ESTIMATED QTY	ESTIMATED CONTAINER SIZE	STAKING	ESTIMATED MATURE HEIGHT
TREES						
AC	Angophora costata	Sydney Red Gum	3	45 litre (Super-Adv)	1x38x38x1800	12.0 metres
AU	Arbutus unedo	Irish Strawberry Tree	2	75 litre (Super-Adv)	1x38x38x1800	6.0 metres
BC	Backhousia citriodora	Lemon Scented Myrtle	10	45 litre (Super-Adv)	1x38x38x1800	6.0 metres
ER	Elaeocarpus reticulatus	Blueberry Ash	8	45 litre (Advanced)	1x38x38x1800	5.0 metres
ES	Eucalyptus saligna	Sydney Blue Gum	3	25 litre (Super-Adv)	1x38x38x1800	15.0 metres
MKP	Magnolia 'Kay Parris'	Compact White Magnolia	5	100 litre (Specimen)	NIL	6.0 metres
NS	Nyssa sylvatica	Tupelo	2	150 litre (Specimen)	NIL	12.0 metres
PO	Plumeria obtusa	Compact Frangipani	18	45 litre (Specimen)	NIL	4.0 metres
PU	Pyrus ussuriensis	Manchurian Pear	5	200 litre (Specimen)	NIL	8.0 metres
SA	Syzygium australe	Lilli Pilli	6	25 litre (Super-Adv)	1x38x38x1800	8.0 metres
TLL	Tristaniopsis laurina 'Luscious'	Water Gum	10	45 litre (Super-Adv)	1x38x38x1800	8.0 metres
WF	Waterhousia floribunda	Weeping Lillipilli	3	45 litre (Super-Adv)	1x38x38x1800	12.0 metres

LARGE SHRUBS

BE	Banksia ericifolia	Heath banksia	20	200mm (Advanced)	1x25x25x1200	3.0 metres
CSEB	Camellia sasanqua 'Edna Butler'	Camellia	30	300mm (Super-Adv)	NIL	3.0 metres
CSPS	Camellia sasanqua 'Pure Silk'	Camellia	40	300mm (Super-Adv)	NIL	3.0 metres
CP	Crinum pedunculatum	Stream Lily	55	300mm (Super-Adv)	NIL	1.5 metres
CCO	Cyrtanthus cooperi	Soft Tree Fern	9	25 litre (Super-Adv)	NIL	4.0 metres
DE	Doryanthes excelsa	Gymea Lily	25	25 litre (Super-Adv)	NIL	2.0 metres
GA	Gordonia axillaris	Gordonia	3	45 litre (Super-Adv)	NIL	5.0 metres
MS	Magnolia soulangiana (White Form)	Magnolia	5	75 litre (Super-Adv)	NIL	5.0 metres
MP	Murraya paniculata	Orange Jessamine	25	300mm (Super-Adv)	NIL	2.0 metres
VEL	Viburnum 'Emerald Lustre'	Sweet Viburnum	24	300mm (Super-Adv)	NIL	3.0 metres
SR	Syzygium 'Resilience'	Compact Lilli Pilli	60	300mm (Super-Adv)	NIL	3.0 metres

SMALL TO MEDIUM SHRUBS

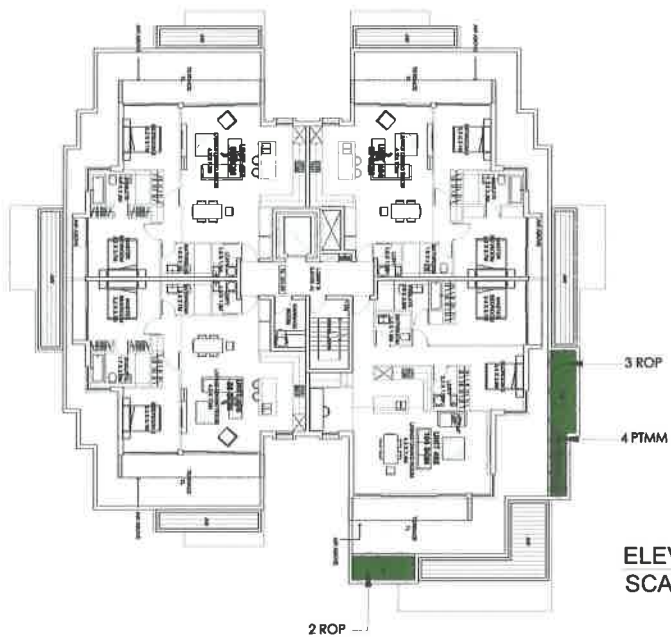
AAM	Azalea 'Alba Magnifica'	White Azalea	25	200mm (Super-Adv)	NIL	1.5 metres
AWL	Azalea 'White Lace'	White Azalea	20	200mm (Super-Adv)	NIL	1.0 metres
AD	Austranmyrtus dulcis	Quakers' Cherry	20	200mm (Super-Adv)	NIL	1.2 metres
BS	Banksia spinulosa	Halpin Banksia	40	200mm (Super-Adv)	NIL	1.5 metres
BMJ	Buxus microphylla var japonica	Japanese Box	80	200mm (Super-Adv)	NIL	1.0 metres
CS	Cordylina stricta	Palm Lily	20	300mm (Super-Adv)	NIL	1.5 metres
GF	Gardenia florida	White Gardenia	75	200mm (Super-Adv)	NIL	1.2 metres
OF	Osmanthus fragrans	White Osmanthus	65	300mm (Super-Adv)	NIL	1.5 metres
PJ	Pieris japonica	Pearl Flower	45	200mm (Super-Adv)	NIL	1.0 metres
PTMM	Pittosporum tobira 'Miss Muffet'	Japanese Mock Orange	40	200mm (Super-Adv)	NIL	1.0 metres
VRW	Vireya rhododendron (White Form)	White Rhododendron	20	300mm (Super-Adv)	NIL	1.2 metres
SBC	Syzygium 'Bush Christmas'	Dwarf Lilli Pilli	55	300mm (Super-Adv)	NIL	1.2 metres
ROP	Raphiolepis 'Oriental Pearl'	Dwarf Raphiolepis	30	200mm (Super-Adv)	NIL	1.0 metres

GROUNDCOVERS

ABW	Agapanthus 'Baby White'	Dwarf Agapanthus	360	200mm (Semi-Adv)	NIL	N/A
DLJ	Dianella 'Little Jess'	Dwarf Flax Lily	240	150mm (Semi-Adv)	NIL	N/A
CM	Clivia miniata	African Lily	280	200mm (Semi-Adv)	NIL	N/A
DCB	Dianella 'Cassa Blue'	Flax Lily	320	150mm (Semi-Adv)	NIL	N/A
DTR	Dianella 'Tas Red'	Red Flax Lily	240	150mm (Semi-Adv)	NIL	N/A
GR	Gardenia radicans	Prostrate Gardenia	380	200mm (Semi-Adv)	NIL	N/A
HL	Hymenocallis littoralis	Spider Lily	180	150mm (Semi-Adv)	NIL	N/A
HS	Hibbertia scandens	Guinea Vine	120	100mm (Semi-Adv)	NIL	N/A
LSV	Liriope spicata varieties	Lily Turf	320	150mm (Semi-Adv)	NIL	N/A
LT	Lomandra 'Tanika'	Weeping Mat Rush	240	150mm (Semi-Adv)	NIL	N/A
OJ	Ophiopogon japonicum	Mondo Grass	580	100mm (Semi-Adv)	NIL	N/A
TJ	Trachelospermum jasminoides	Star Jasmine	180	150mm (Semi-Adv)	NIL	N/A
VH	Viola hederacea	Creeping Violet	240	100mm (Semi-Adv)	NIL	N/A
ZC	Zephyranthes candida	Autumn Crocus	340	150mm (Semi-Adv)	NIL	N/A



ELEVATED PLANTER BOXES TO BUILDING B, LEVEL 1.
SCALE 1:200



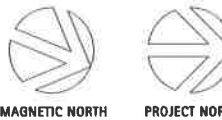
ELEVATED PLANTER BOXES TO BUILDING B, LEVEL 3.
SCALE 1:200

NOTES (LEVELS 1, 3 & 4)

- A 40mm depth drainage layer of Draincell® shall be placed on base of all on-structure planted areas and covered with geotextile filtration layer as specified. The geotextile shall be protected by a 100mm layer of coarse sand as specified.
- Imported topsoil as specified shall be spread to the site as follows:
 - on structure planting beds & raised planters nominal 600mm depth of planter box mix as specified.
- All planting beds shall be mulched to a depth of 50mm with 15mm horticultural grade pinebark.
- Refer to Architect's and Engineer's Site Plans for precise information regarding paving, finished levels, roadworks, fences, lighting, structures and drainage details.
- A fully automatic drip irrigation system shall be installed to all elevated planter boxes and planting beds. Irrigation shall conform to AS3500 and Sydney Water regulations.

800MM NOMINAL DEPTH
ELEVATED PLANTER BOXES

NOTE:
PLANTS ARE LIVING ORGANISMS. IF THEY ARE MAINTAINED IN A HEALTHY CONDITION THEY SHALL CONTINUE TO GROW. IT WILL THEREFORE BE NECESSARY TO REGULARLY MONITOR THE GROWTH OF THE PLANTS SO THAT THEY CAN BE PRUNED OR OTHERWISE ATTENDED TO SO THAT THEY DO NOT OVERTHROW THEIR ALLOTTED SPACE.
EXACT LOCATION OF SITE BOUNDARIES ARE TO BE CONFIRMED ON SITE PRIOR TO COMMENCEMENT OF WORK.
WRITTEN DIMENSIONS SHALL TAKE PRECEDENCE OVER SCALED MEASUREMENTS. ALL DIMENSIONS AND LEVELS SHALL BE VERIFIED BY CONTRACTOR ON SITE. CONTRACTOR SHALL OBTAIN LANDSCAPE ARCHITECT'S WRITTEN APPROVAL OF BOUNDARY SETOUT PRIOR TO COMMENCEMENT OF WORK. IF IN DOUBT, CONTACT LANDSCAPE ARCHITECT.
ANY BATTER GREATER THAN 1 IN 3 SHALL BE ESTABLISHED BY APPROVED GEOGRAPHIC OR OTHER EROSION CONTROL MEASURE. TO SATISFACTION OF LANDSCAPE ARCHITECT.
FINAL PLANT SITES MAY BE ADJUSTED AS NECESSARY TO SUIT AVAILABILITY OF PLANT SPECIES AT TIME OF IMPLEMENTATION AND FINAL PROJECT BUDGET.
SHOULD PROPOSED TREE LOCATIONS HAVE THE POTENTIAL TO INTERFERE WITH EXISTING OR PROPOSED UTILITIES, CONTRACTOR SHALL ADVISE LANDSCAPE ARCHITECT AND OBTAIN INSTRUCTIONS PRIOR TO PROCEEDING.



ISSUE	DESCRIPTION	DATE
C	ISSUED FOR DEVELOPMENT APPLICATION	18/12/13
B	PRELIMINARY DEVELOPMENT APPLICATION	13/12/13
A	FOR REVIEW AND DISCUSSION	04/12/12

Peter Glass & Associates
Landscape Architects
Environmental Planners
Pool Designers

69 Christie Street, St Leonards NSW 2065
Phone (02) 9906 2727 Fax (02) 9906 4470
Email: design@peterglass.com.au
Web: www.peterglass.com.au

CLIENT
CAXTON PROPERTY (CHAPMAN) PTY LTD

PROJECT
**PROPOSED RESIDENTIAL
DEVELOPMENT
1-5 CHAPMAN AVE,
BEECROFT NSW**

DRAWING TITLE
**LEVEL FOUR LANDSCAPE PLAN,
INDICATIVE PLANT SCHEDULE
AND PLANT IMAGE PANEL**

SCALE 1:200 @ A1
DESIGNED/DRAWN PL/MT
CHECKED PL
DATE 18/11/2013
JOB NUMBER 3159

DRAWING NUMBER 3159-02
ISSUE C

TREES



WATERHOUSIA FLORIBUNDA
WEEPING LILLIPILLI



ELAEOCARPUS RETICULATUS
BLUEBERRY ASH



TRISTANIOPSIS LAURINA 'LUSCIOUS'
WATER GUM



NYSSA SYLVATICA
TUPELO



MAGNOLIA 'KAY PARRIS'
WHITE MAGNOLIA



GORDONIA AXILLARIS
GORDONIA



PYRUS 'USSURIENSIS'
ORNAMENTAL PEAR

LARGE SHRUBS



CAMELLIA SASANQUA 'PURE SILK'
CAMELLIA



VIBURNUM 'EMERALD LUSTRE'
SWEET VIBURNUM



SYZYGIUM 'RESILIENCE'
COMPACT LILY PILI



MAGNOLIA SOULANGIANA 'WHITE FORM'
MAGNOLIA

SMALL TO MEDIUM SHRUBS



RAPHIOLEPIS 'ORIENTAL PEARL'
DWARF RAPHIOLEPIS



BANKSIA SPINULOSA
HALPIN BANKSIA



CRINUM PEDUNCULATUM
STREAM LILY



GARDENIA FLORIDA
WHITE GARDENIA



VIREYA RHODODENDRON (WHITE FORM)
WHITE RHODODENDRON



CORDYLINA STRICTA
PALM LILY



PITTOSPORUM 'MISS MUFFET'
JAPANESE MOCK ORANGE

GROUNDCOVERS



DIANELLA 'TAS RED'
RED FLAX LILY



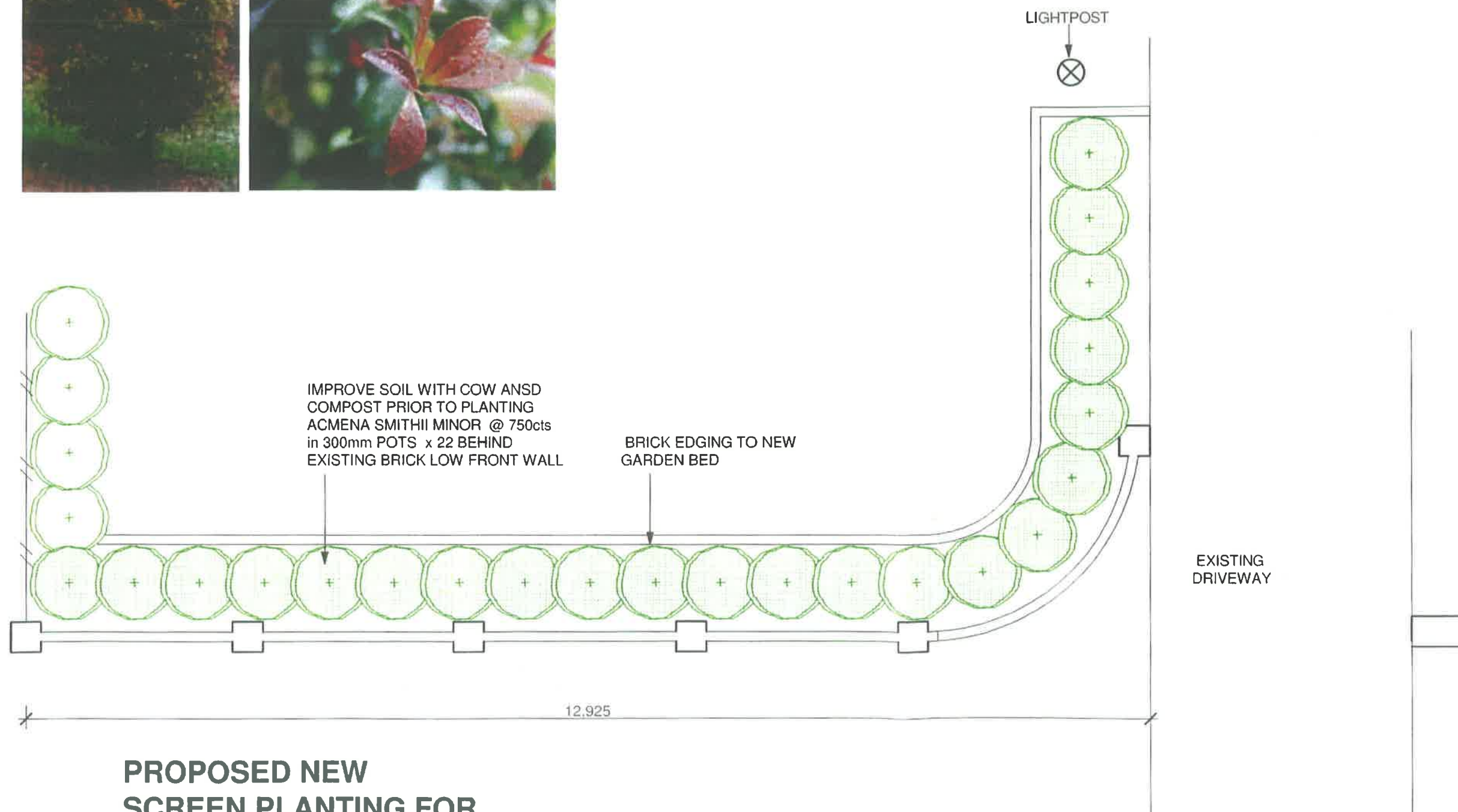
GARDENIA RADICANS
PROSTRATE GARDENIA



AGAPANTHUS 'DWARF WHITE'
DWARF WHITE AGAPANTHUS



LIRIOPE MUSCARI
LILY TURF



**PROPOSED NEW
SCREEN PLANTING FOR
No16 CHAPMAN AVE BEECROFT**



janebrittdesign

No 39 Susan St Annandale NSW 2038 mob: 0404 085840 email: jane@britt.com.au

project
**PROPOSED SCREEN LANDSCAPING
No 16 CHAPMAN AVE BEECROFT**

drawing
PLAN

amendments
A. Plants amended 14/05/14

date
MAY 2014

scale
1:50

WDL 2